



SHOWARE CENTER

The ShoWare Center in Kent, Washington is a dynamic new venue for sports, entertainment, concerts and trade shows. Home to the Seattle Thunderbirds hockey team, the center can hold 6,100 spectators for hockey and 7,800 for concerts.

The focus of the design is dramatizing the experience of the event. The building features a giant sloping polished stainless steel soffit at the perimeter of the glass enclosed lobby. The soffit reflects the activities of the patrons, graphics, and lighting, amplifying the excitement of the event. The facility is transformed by the reflections into a big, interactive sculpture of people, graphics and lighting.

Painted green “energy lines” on the ground, highlighted by LED lights at night, lead event-goers toward the venue’s main entrance. Oversized hockey-puck-shaped structures serve as benches and meeting places, representing the center as the home of Seattle’s hockey team. Inside, super-sized graphics, including jumbo section numbers and extra-large “people” symbols at restrooms, animate the public experience.

Visibly differentiating the ShoWare Center from other “black box” event centers is the indoor exposure to natural light. The first-floor concourse level of the ShoWare Center is surrounded by a glass façade which provides light to the public spaces within as well as makes the activity and excitement visible to passersby. A portion of the upper club level is also bordered by large windows, with operable shutters made from airplane hangar doors, allowing patrons views of the plaza and Mt. Rainier to the south.

ShoWare Center is one of the first new-construction event center projects in the country to pursue LEED® Silver. Sustainable elements of the ShoWare Center include a variety of water-efficient features that will lead to an estimated 40 percent savings in water usage, and energy smart lighting, heating and cooling systems, including the ice-making equipment, which is predicted to reduce energy use 37 percent over the national standards.

A rainwater collection system uses water obtained from the roof to replenish the wetlands adjacent to the center’s site. The parking area is constructed over a layer of gravel, which acts as a sponge and holds storm water, providing a controlled release of rainwater into the drainage system.

Location:	Kent, Washington
Owner:	City of Kent
Cost:	\$63 million construction cost
Size:	154,400 square feet



SHOWARE CENTER

DESIGN FEATURES

- * The design of the ShoWare Center is playful, sculptural and light. Simple materials are used in creative ways to make a dynamic and interactive space for sports and entertainment.
- * The exterior face features a giant, sloping stainless steel soffit that is angled to capture the activity of a busy plaza and events space. Patrons approaching the facility and community passersby can see themselves reflected in the soffit. Even the graphics that say “ShoWare Center” are horizontal below the soffit so the name actually is read through the reflection.
- * Giant concrete hockey pucks are placed and lit around the plaza to serve as meeting places and benches, announcing a point of pride for the city of Kent as the home of the Thunderbirds hockey team.
- * Green “energy lines” lit by LED lights lead event-goers to the main entry and reinforce the feeling of anticipation of upcoming events.
- * Supersized graphics along the inside of the concourse walls, including jumbo section numbers and extra-large “people” symbols at restrooms, are playful design elements that help visitors find their way.
- * The events center facade opens up the public spaces to large amounts of natural light. Glass surrounds the first-floor concourse level. Punched openings on the east and west sides of the second floor connect to the suite level. And the southwest corner of the upper-level club lounge has large windows that allow light to reach all the way into the bowl. Big operable shutters made out of airplane hangar doors also can block the light.

SUSTAINABLE FEATURES

- * Targeting LEED® Silver certification
- * Water efficient fixtures that will lead to an estimated 40 percent savings in water usage
- * Energy efficient ice-making equipment, including capture of the excess heat that is rejected from the ice-making equipment to warm the ground under the ice rink to maintain the integrity of the foundation
- * Energy smart lighting, heating and cooling systems that will save an estimated 37 percent above national standards
- * Stormwater management that includes a gravel layer under the parking area to act like a sponge in heavy rains to hold runoff and provide a controlled release back into the nearby drainage system
- * Rainwater collected on the roof is used to recharge the existing wetlands to the north and west sides of the building
- * Natural daylighting combined with the use of low-VOC materials support healthy indoor environments
- * Locally harvested and manufactured products used throughout the construction to reduce use of natural resources and minimize material transportation
- * Recycling of 90 percent of construction debris
- * Priority parking for carpoolers, fuel-efficient cars and bicyclists



SHOWARE CENTER

LMN ARCHITECTS

LMN specializes in designing convention centers, cultural arts venues, higher education facilities, commercial and mixed-use developments and urban environments that celebrate and enrich communities. The Seattle-based firm designs both public and private projects with a particular focus on their connection to the public realm. Founded in 1979, LMN has earned an international reputation for high quality design, successfully managing complex projects, and delivering progressive, sustainable solutions.

LMN's approach draws upon the people, program, and place to create architecture that evokes a unique experience and contributes to the evolution of a community's culture. Through rigorous exploration and research of the possibilities offered by modern technology, the firm's work combines functional spaces with concepts that redefine the very model of urban development.

The firm's multi-disciplinary 106-person team includes architects, interior designers and urban planners, with projects throughout the United States and in six foreign countries. LMN is recognized for its outstanding design of civic and public buildings, while strategically navigating the complexities of budget, schedule and process. To that end, the firm's work has been honored with more than 120 design awards.

Public projects include the new Vancouver Convention Centre in British Columbia (which has the largest non-industrial green roof in North America); Benaroya Hall, home to Seattle's Symphony; Marion Oliver McCaw Hall, home to the Seattle Opera and Pacific Northwest Ballet; and the Duke Energy Center, an expansion to the Cincinnati Convention Center. Significant higher education projects include the Paul G. Allen Center for Computer Science and Engineering and the Michael G. Foster School of Business at the University of Washington, the Biotechnology/Life Sciences Facility at Washington State University, the Conrad Prebys Music Center at the University of California at San Diego and the performing arts center at the City College of San Francisco.



SHOWARE CENTER

PROJECT TEAM

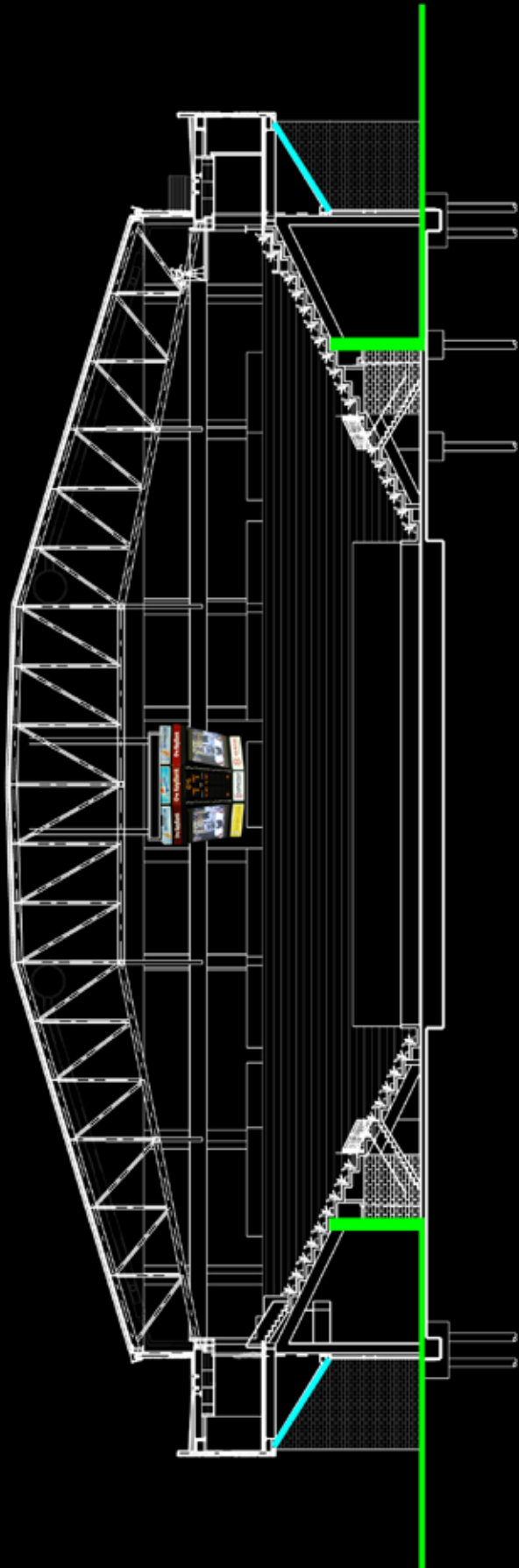
Owner: City of Kent
Owner's representative: Shiels Oblatz Johnsen, Seattle
Architect: LMN Architects, Seattle
General Contractor: Mortenson, Bellevue
Ice Sheet/Bowl Design Consultant: PBK Architects, Vancouver, British Columbia
Structural/Civil Engineer: Magnusson Klemencic Associates, Seattle
Mechanical Engineer: Wood Harbinger, Bellevue
Electrical/Acoustical Engineer: Sparling, Seattle
Geotechnical Engineer: Shannon & Wilson, Seattle
Landscape Architect: Site Workshop, Seattle
Electrical/Mechanical Consultant: Genivar, Vancouver, British Columbia
Lighting Consultant: Candela, Seattle
Graphics/Signage: Widmeyer Design, Seattle
Food Service: William Caruso + Associates, Denver
Code Consultant: Flack+Kurtz, Seattle
Cost Consultant: Davis Langdon, Seattle
Sustainability Consultant: Paladino & Company, Seattle

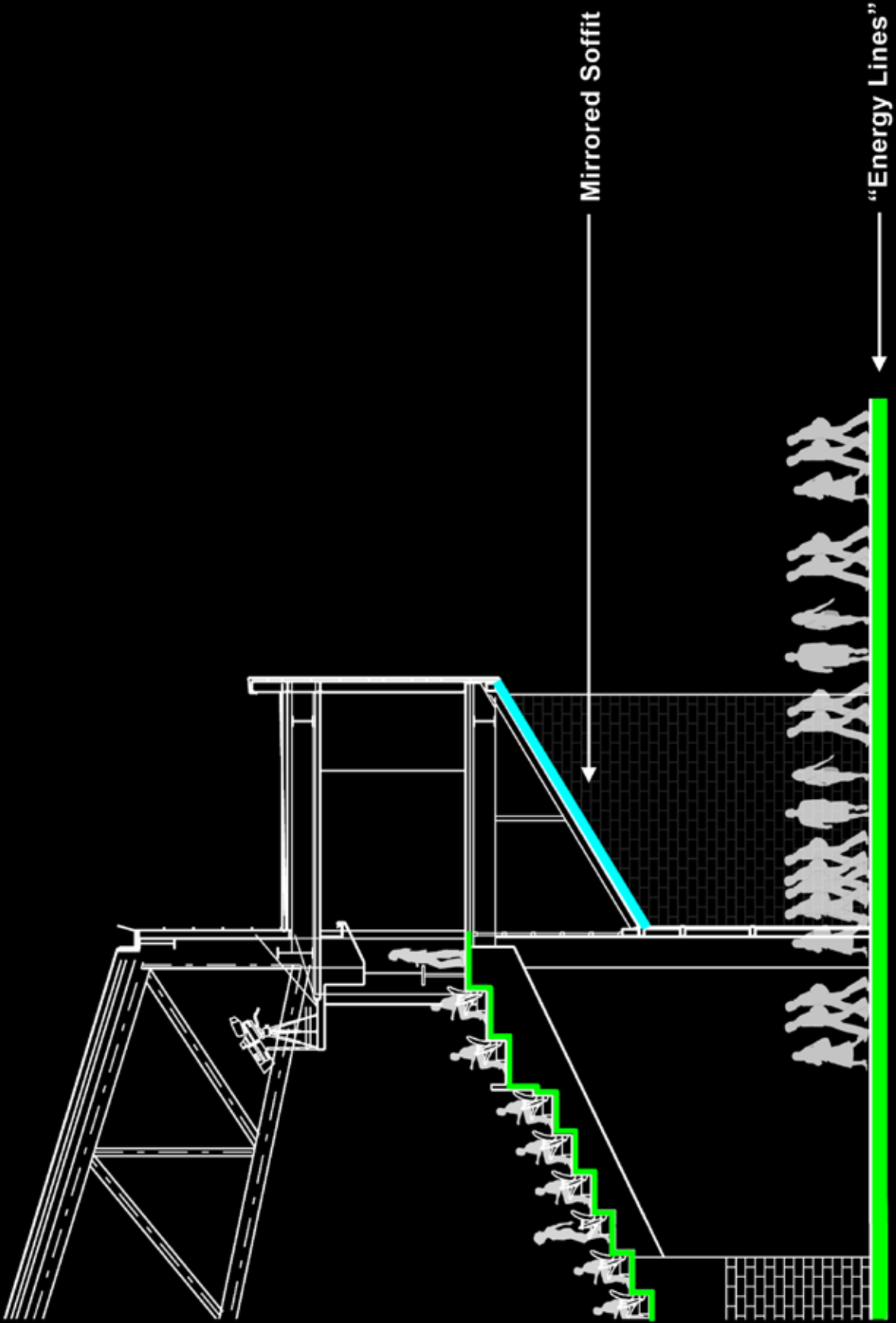
IMAGE CREDITS

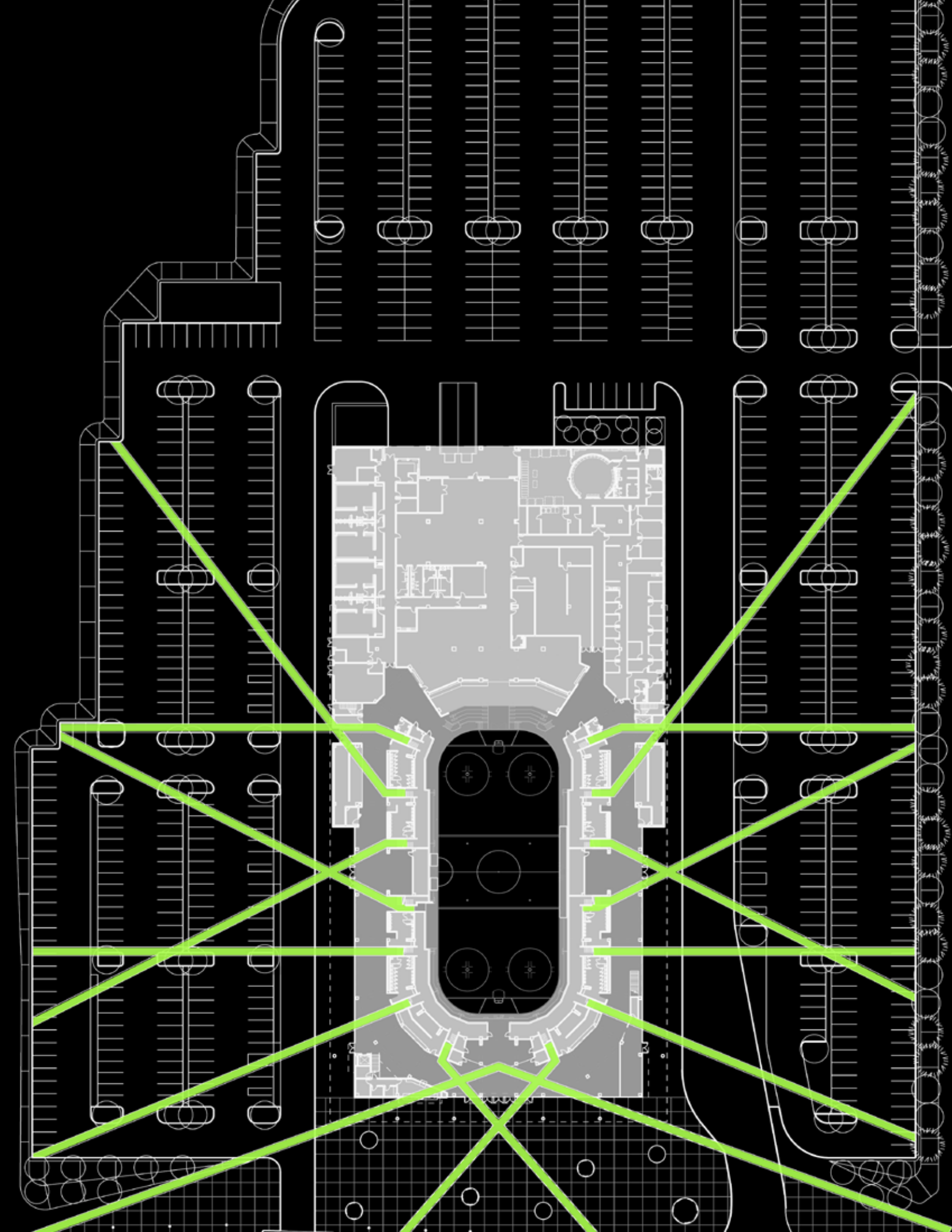
LMN Architects
Lara Swimmer/Lara Swimmer Photography

Photography:

01_LMN Architects
02_LMN Architects
03_LMN Architects
04_Lara Swimmer
05_Lara Swimmer
06_Lara Swimmer
07_LMN Architects
08_LMN Architects
09_LMN Architects
10_Lara Swimmer
11_Lara Swimmer











Castro

103 | 104



104

103



Watt's ShowWare

3:52	12:52
0	0
0	0
0	0

Comcast

Scoreboard

1st Period

2nd Period

3rd Period

Watts

Comcast

Fred Meyer

THE HOCKEY STORE

Season's Greetings

IBEX

WATTS

WATTS

WATTS

WATTS

WATTS

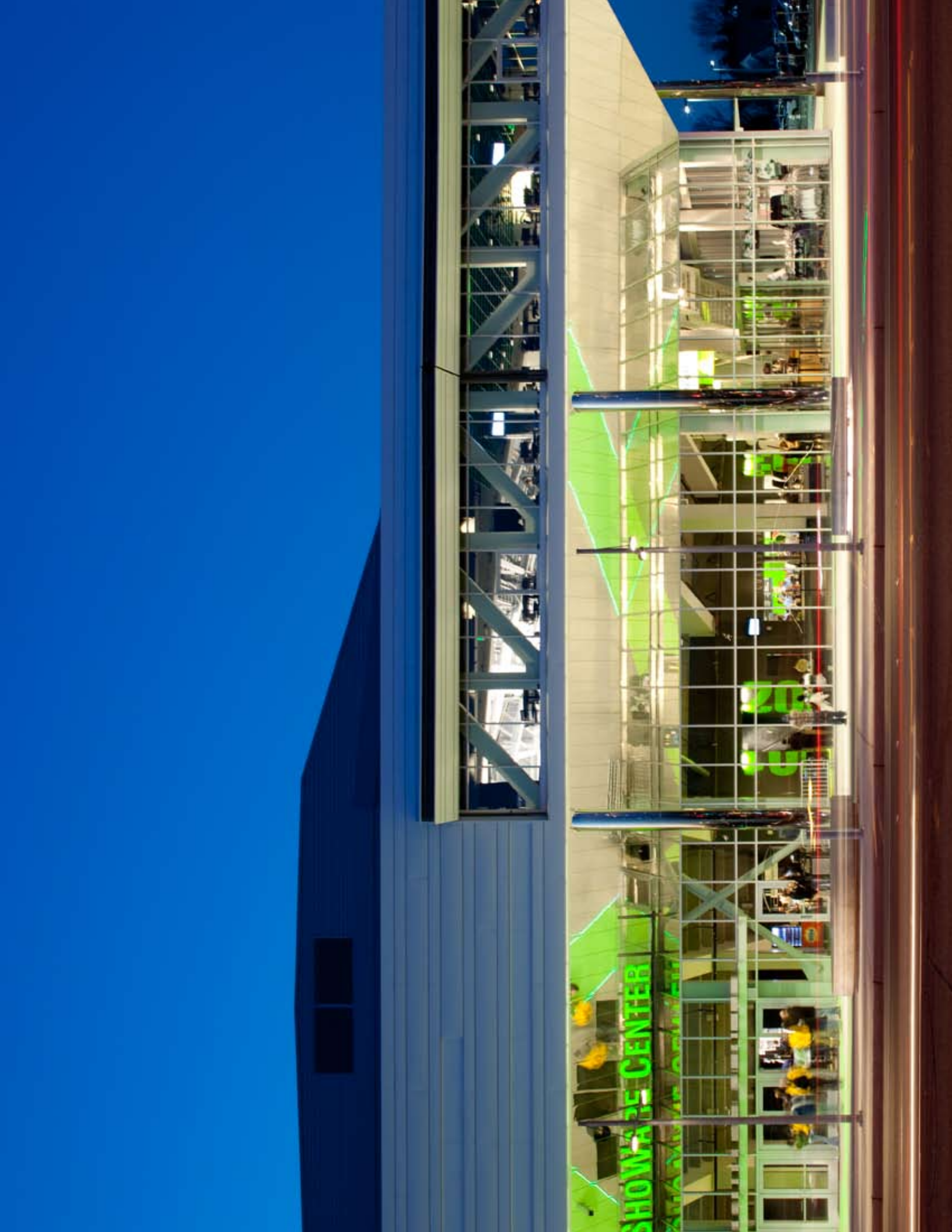
SOFTWARE CENTER





SHOWWARE CENTER







SHOWARE CENTER